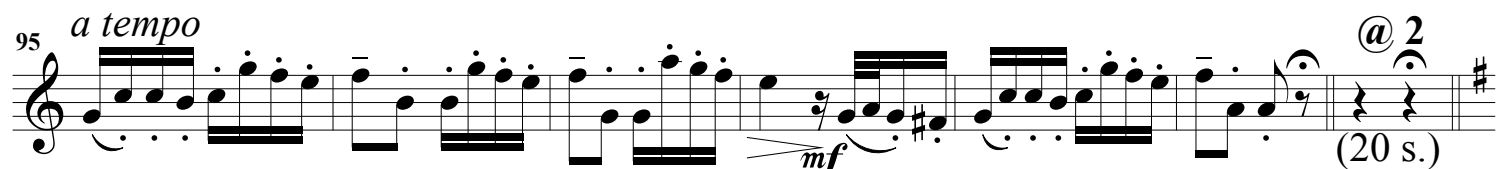
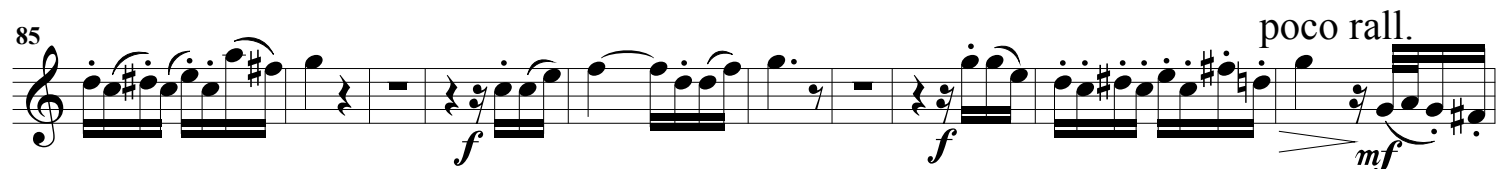
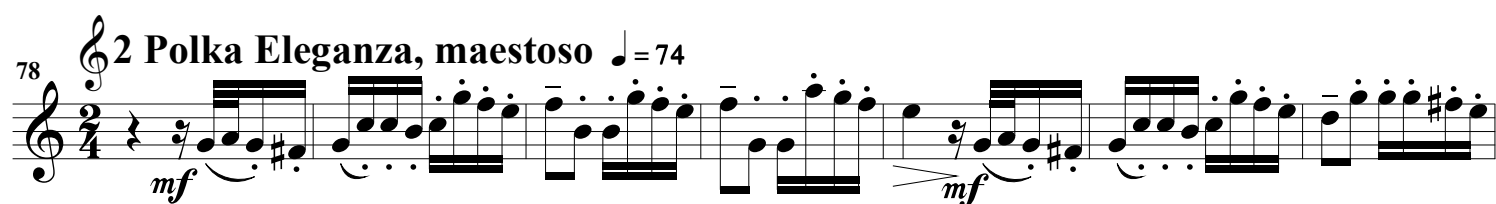
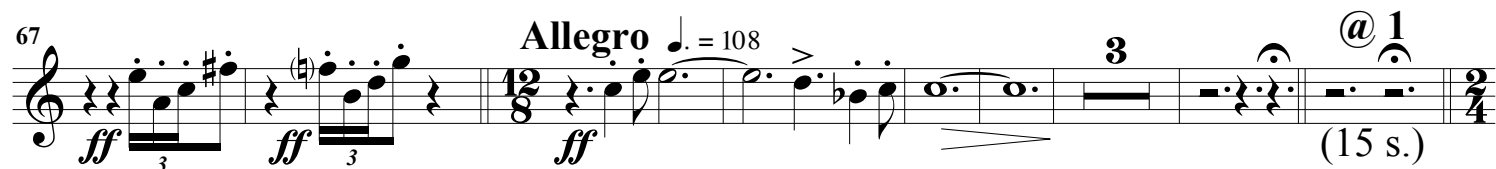
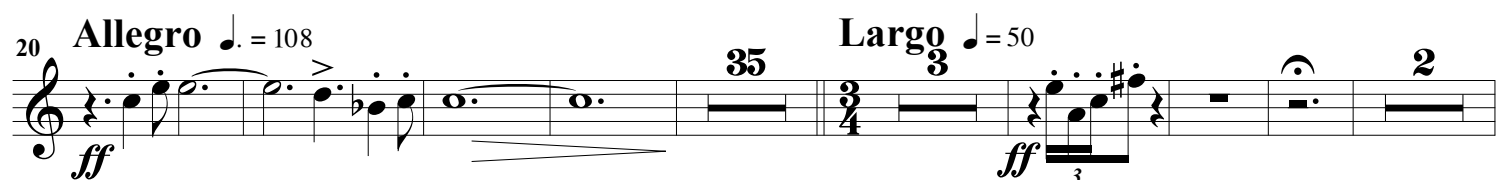
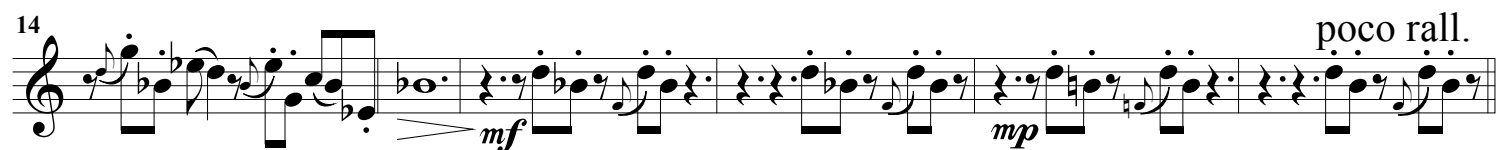
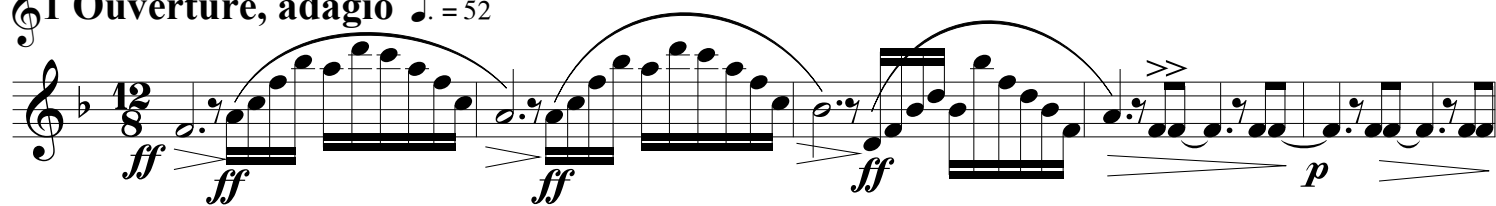


Repelsteeltje

Clarinet in B \flat 1

Arie van Hoek

1 Overture, adagio $\text{♩} = 52$



102 **3 Moto Mechanica, allegro** ♩ = 120

p

111

120

128

decresc.

136 **4 Moto Mechanica, allegro** ♩ = 120

p

(10 s.)

146

155 **5 Marcia Pomposo, maestoso** ♩ = 96

@ 4 Tempo rubato

(40 s.)

mf > *mf* > *mf* (#)

172

rall. poco a poco

181

accel. *ff* *rit.* *a tempo* *Tempo rubato*

mf > *mf* >

197 **@ 5** **6 Moto Mechanica, allegro** $\text{♩} = 120$
ff (25 s.) *p*

206 **@ 6**
 (25 s.)

216 **7 Tempo Breve** $\text{♩} = 148$ **8 Marcia Pomposo, maestoso** $\text{♩} = 96$
ff (17 s.) *mf* *> mf* *> mf*

234 *rall. poco a poco*

244 *accel.* *ff* *rit. a tempo* *p* *mf* *> mf* *>* **4**

257 *Tempo rubato* **9 Valse Triste, andante** $\text{♩} = 92$
 (25 s.) *p*

271 **@ 9**
 (15 s.) *mp*

281 **10 Valse Triste, andante** ♩ = 92

mf *p* *pp* 1 - 7

291

pp

300 **11 Entrada Pontifical** @ 10 **12 Entrada Pontifical** @ 11

f 3 (15 s.) 12 (10 s.) 11 (10 s.) 11 (30 s.) 12 (30 s.)

330 **13 Moto Mechanica, allegro** ♩ = 120

p 1 - 4 2 3 4

337

1 - 4 2 3

345

4

352 @ 13 (40 s.)

@ 13 (40 s.)

359 **14 Valse Triste, andante** ♩ = 92

mf *mp*

368 @ 14 (25 s.)

mp @ 14 (25 s.)

377 **15 Moto Mechanica, allegro** $\text{♩} = 120$

p

385

1 - 4 2 3 4

393

402 **16 Valse Triste, andante** $\text{♩} = 92$

@ 15 (25 s.) *mf* *mp*

410 **17 Moto Mechanica, allegro** $\text{♩} = 120$

@ 16 (30 s.) *mp* *p*

419

1 - 4 2

426

3 4 1 - 4

433

2 3 4 1 - 4 2 3 4 1 - 4

441 *decresc.* @ 17 (30 s.)

18 Valse Romantique, $\text{♩} = 162$ *rall.* *a tempo*

450 *f* *mf*

459 *mf*

470 *f* *mp* *molto rall.* **valse cantabile**, $\text{♩} = 108$

490 *pp* *pp*

19 Tempo Misterioso, andante $\text{♩} = 92$ **20 Entrada Pontifical**

504 *@ 18.* (18 s.) *pp* *f* *@ 19.* (4 s.) *@ 20.* (18 s.)

21 Valse Triste, andante $\text{♩} = 92$

524 *mf* *mp* *mp* *@ 21* (50 s.)

22 Entrada Pontifical **23 Entrada Pontifical** **24 Canzone di nome, allegretto**

534 *@ 22.* (25 s.) *@ 23.* (30 s.) *@ 24.* (25 s.) *ff*

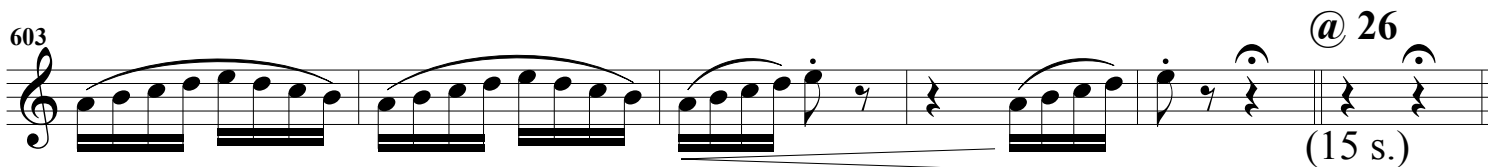
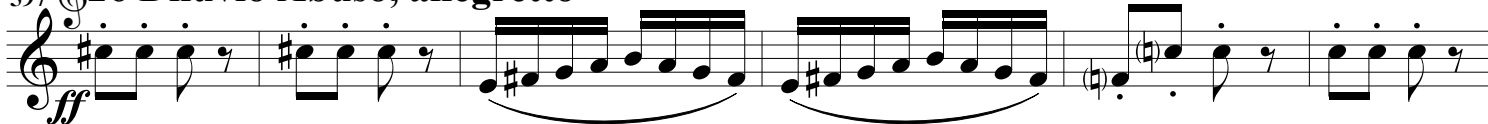
25 Diluvio Abuso, allegretto $\text{♩} = 92$

577 *change to clar. in A* *ff*

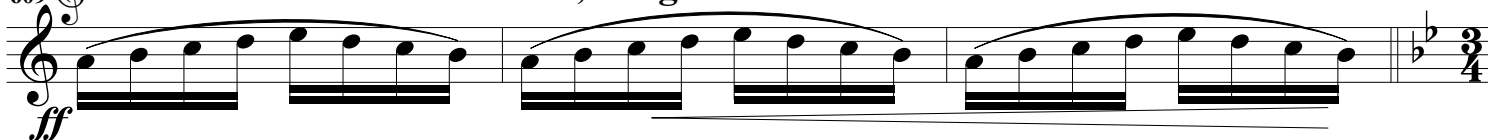
583

591 *@ 25* (10 s.)

597 **26 Diluvio Abuso, allegretto**



609 **27 Diluvio Abuso a Pondera, allegretto** ♩ = 92



626 **28 Grande Valse Romantique, ♩ = 168**

