

Repelsteeltje, suite uit de sprookjesmuziek

Overture, adagio $\text{♩} = 52$

Arie van Hoek

Bassoon 1

5

10

13

20

28

35

42

46

50

ff *p* *mf* *f* *pp* *Allegro* *ff* *mp* *legato* *p* *mp* *legato* *decresc.*

59 **Largo** $\text{♩} = 50$

ff *ff* *ff*

69 **Allegro** $\text{♩} = 108$

ff

76 **Polka Eleganza, maestoso** $\text{♩} = 76$

mf *ff* *mf* *ff* *staccatissimo.*

89

ff *mf*

101 **Moto Mechanica, allegro** $\text{♩} = 120$

mp

110

119

mp

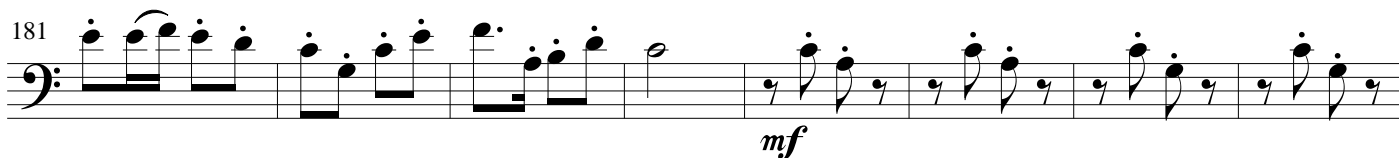
127

135

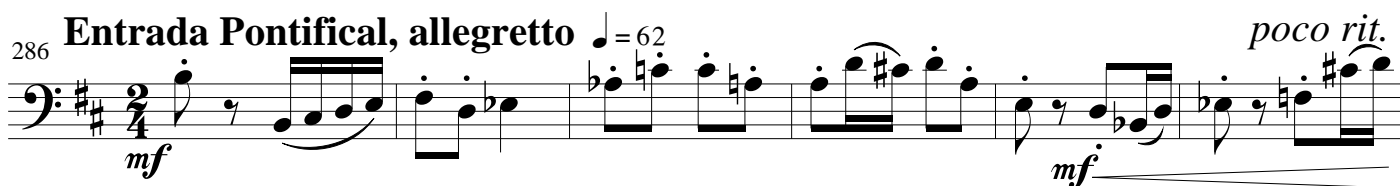
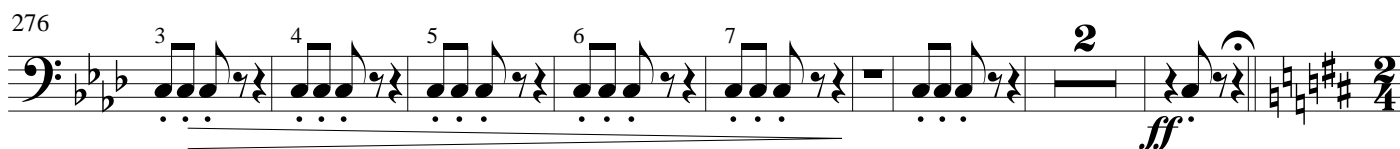
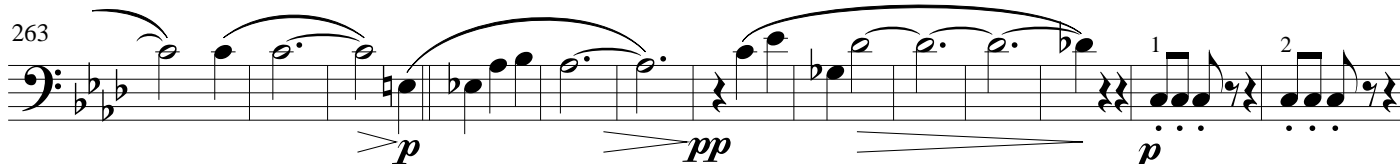
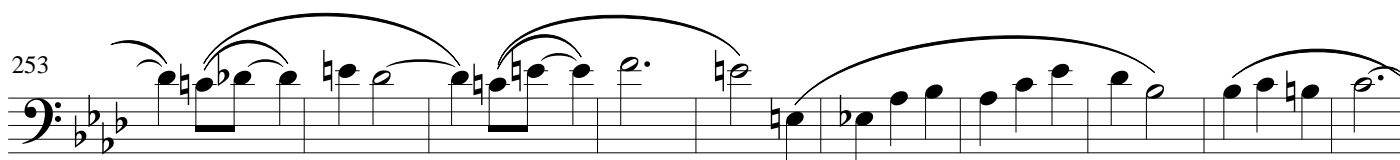
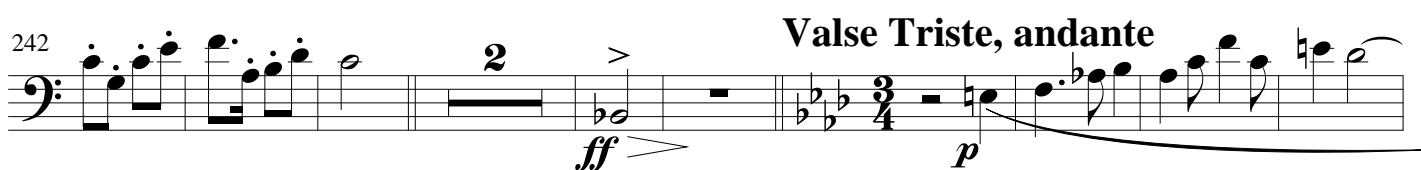
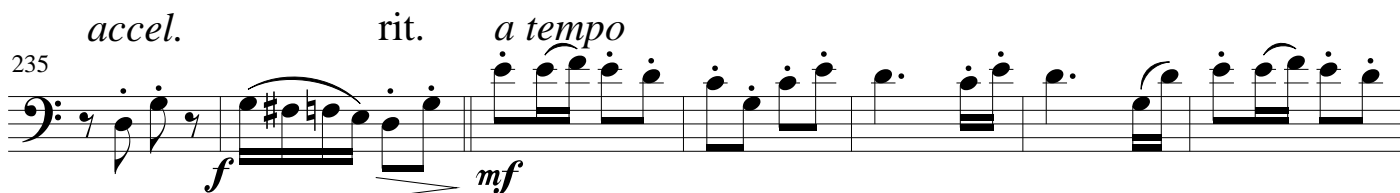
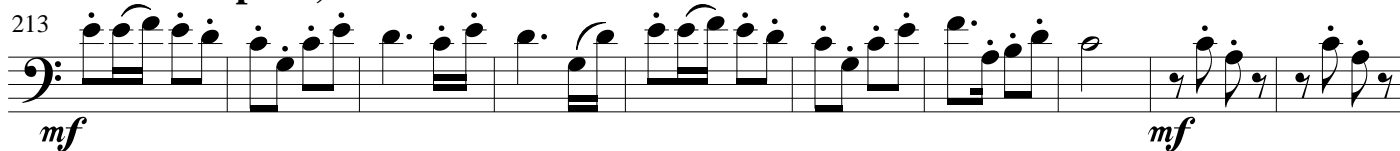
mp



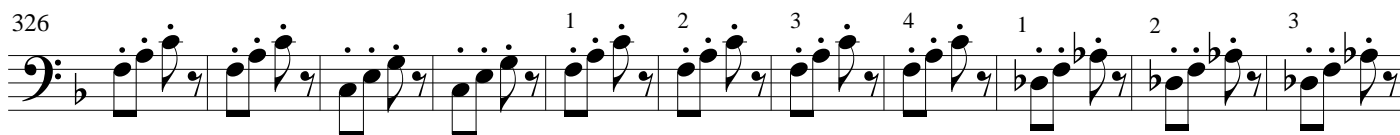
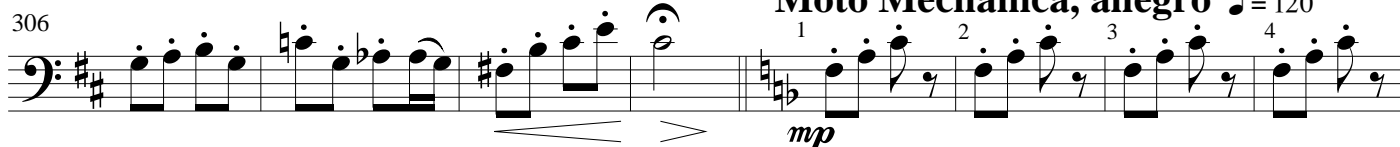
Marcia Pomposo, maestoso ♩ = 96



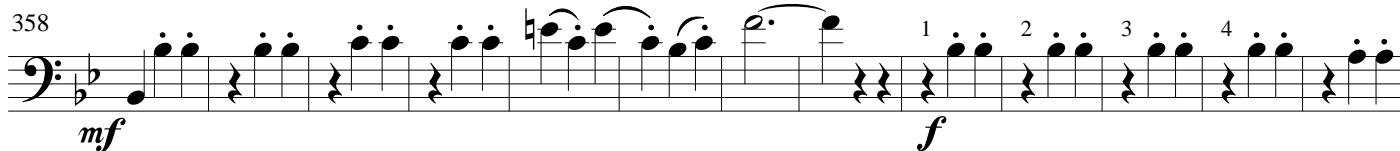
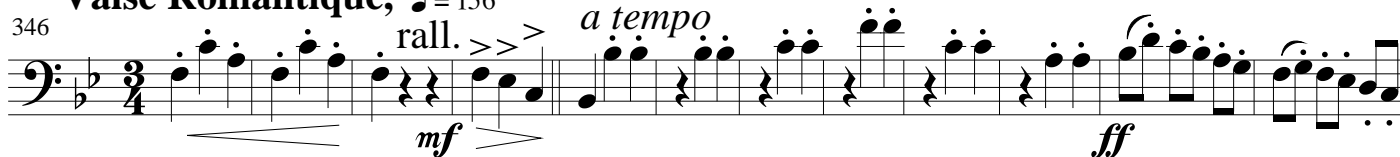
Marcia Pomposo, maestoso ♩ = 96



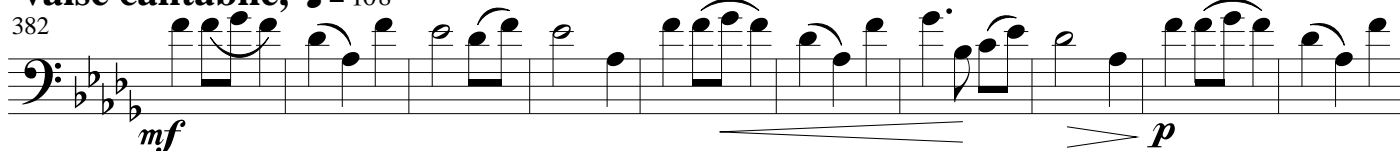
Moto Mechanica, allegro $\text{♩} = 120$



Valse Romantique, $\text{♩} = 156$



valse cantabile, $\text{♩} = 108$



404 **Entrada Pontifical, allegretto** ♩ = 62 *poco rit.*

411 *a tempo*

419 *rall.* **Valse Triste, andante**

425

436 **Canzone di nome** 4 15 **Diluvio Abuso, allegretto** ♩ = 92

463

474

485 *poco accel.* **Andante** ♩ = 82 10

502

508 **Grande Valse Romantique, ♩ = 168**

522 *a tempo*

mf *p* *p*

545

f *f* *p*

564

p *mf* *molto rall.* *mp*

592 *a tempo*

mp

603

mp

632 *poco meno mosso*

ff

642

7 1.

656 *rall. molto a tempo*

f *p* *p*

672

mf *f* *ff*