

95

*mf*

102

*mf*

107

114

*mp*

128

*mf*

137

*f*

144

*mf*

146

*mp*

154

*p*

162

166

Thema fugatu

5

175 *mp* *f*

Staff 175-184: Bass clef, key of B-flat major. Measures 175-184. Measure 175 starts with a triplet of eighth notes. Measure 176 has a triplet of eighth notes. Measure 177 has a triplet of eighth notes. Measure 178 has a triplet of eighth notes. Measure 179 has a triplet of eighth notes. Measure 180 has a triplet of eighth notes. Measure 181 has a triplet of eighth notes. Measure 182 has a triplet of eighth notes. Measure 183 has a triplet of eighth notes. Measure 184 has a triplet of eighth notes.

185 *mf*

Staff 185-190: Bass clef, key of B-flat major. Measures 185-190. Measure 185 has a quarter note. Measure 186 has a quarter note. Measure 187 has a quarter note. Measure 188 has a quarter note. Measure 189 has a quarter note. Measure 190 has a quarter note.

191

Staff 191-197: Bass clef, key of B-flat major. Measures 191-197. Measure 191 has a quarter note. Measure 192 has a quarter note. Measure 193 has a quarter note. Measure 194 has a quarter note. Measure 195 has a quarter note. Measure 196 has a quarter note. Measure 197 has a quarter note.

198 *p*

Staff 198-205: Bass clef, key of B-flat major. Measures 198-205. Measure 198 has a quarter note. Measure 199 has a quarter note. Measure 200 has a quarter note. Measure 201 has a quarter note. Measure 202 has a quarter note. Measure 203 has a quarter note. Measure 204 has a quarter note. Measure 205 has a quarter note.

206 *p* *mp*

Staff 206-211: Bass clef, key of B-flat major. Measures 206-211. Measure 206 has a quarter note. Measure 207 has a quarter note. Measure 208 has a quarter note. Measure 209 has a quarter note. Measure 210 has a quarter note. Measure 211 has a quarter note.

212 *mf*

Staff 212-217: Bass clef, key of B-flat major. Measures 212-217. Measure 212 has a quarter note. Measure 213 has a quarter note. Measure 214 has a quarter note. Measure 215 has a quarter note. Measure 216 has a quarter note. Measure 217 has a quarter note.

218 *f*

Staff 218-224: Bass clef, key of B-flat major. Measures 218-224. Measure 218 has a quarter note. Measure 219 has a quarter note. Measure 220 has a quarter note. Measure 221 has a quarter note. Measure 222 has a quarter note. Measure 223 has a quarter note. Measure 224 has a quarter note.

225 *mf* *mp*

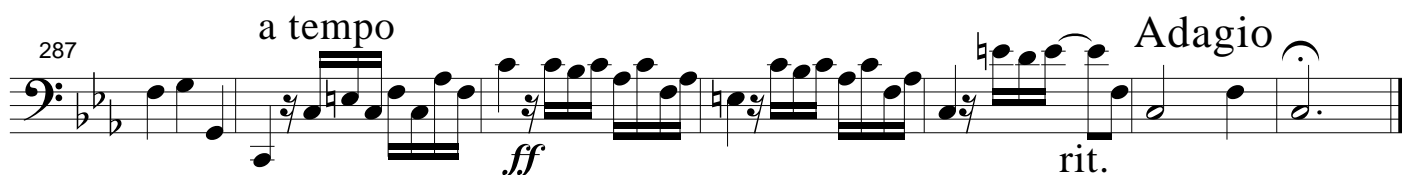
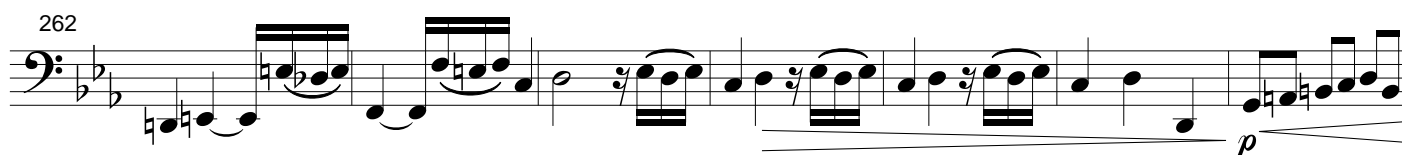
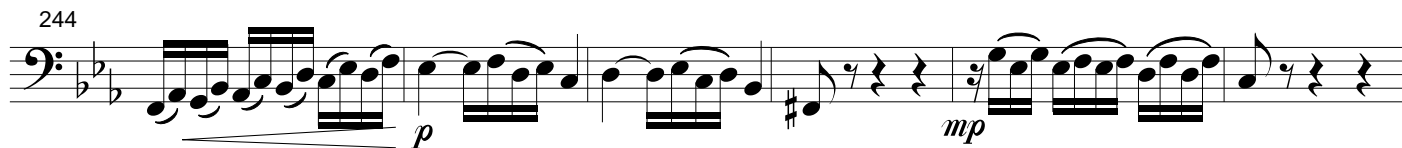
Staff 225-230: Bass clef, key of B-flat major. Measures 225-230. Measure 225 has a quarter note. Measure 226 has a quarter note. Measure 227 has a quarter note. Measure 228 has a quarter note. Measure 229 has a quarter note. Measure 230 has a quarter note.

231 *p*

Staff 231-235: Bass clef, key of B-flat major. Measures 231-235. Measure 231 has a quarter note. Measure 232 has a quarter note. Measure 233 has a quarter note. Measure 234 has a quarter note. Measure 235 has a quarter note.

236 *pp*

Staff 236-241: Bass clef, key of B-flat major. Measures 236-241. Measure 236 has a quarter note. Measure 237 has a quarter note. Measure 238 has a quarter note. Measure 239 has a quarter note. Measure 240 has a quarter note. Measure 241 has a quarter note.



# Passacaglia in C-moll, BWV 582

Maestoso

Johann Sebastian Bach, zetting voor blaas sextet door Arie van Hoek

Bassoon

1 7 *mp*

16 3 *mf* *mp*

26

33 *ff*

41 *mp*

50 7 *mp* *p*

66 *p*

75

81 *p*

89 *mp*