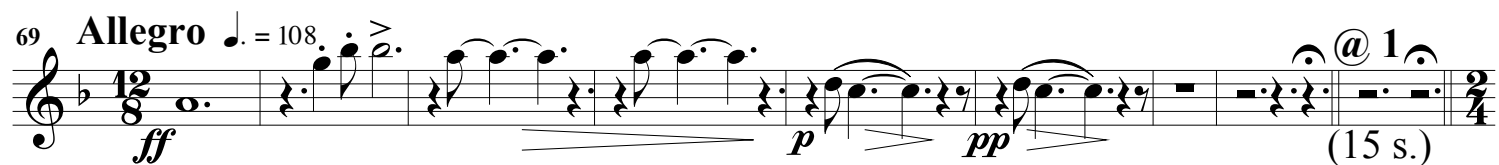
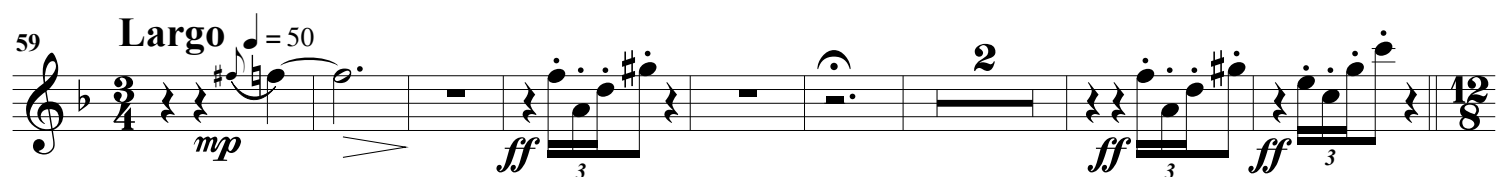
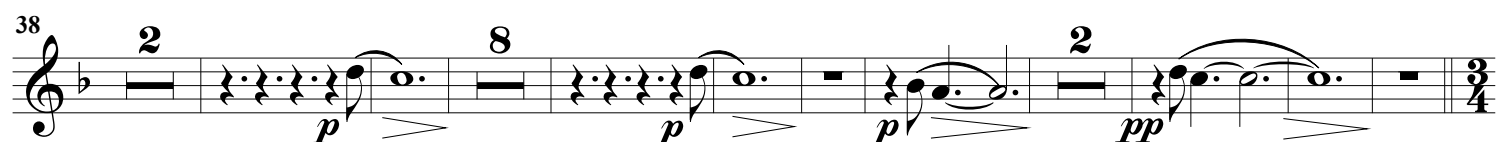
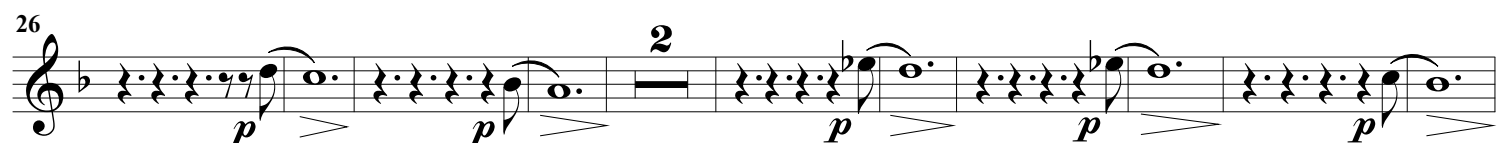
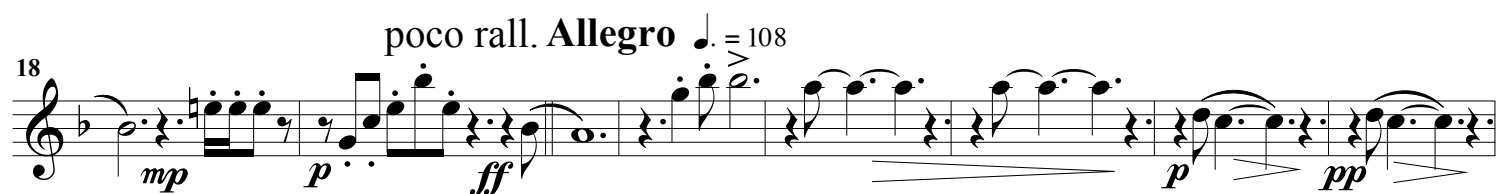
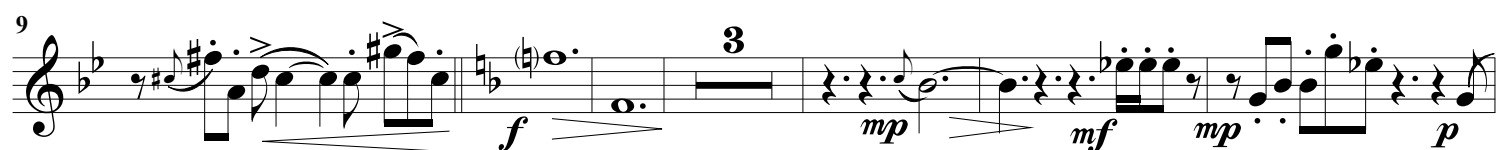
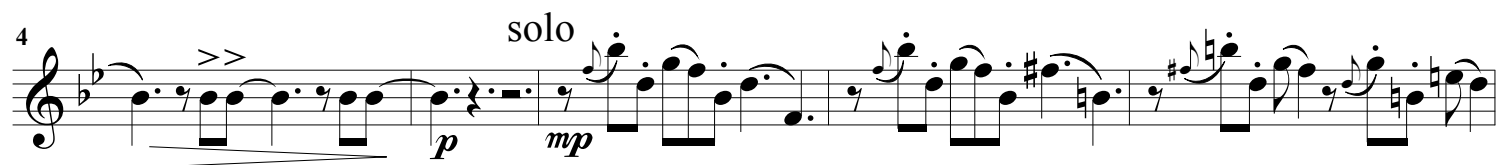
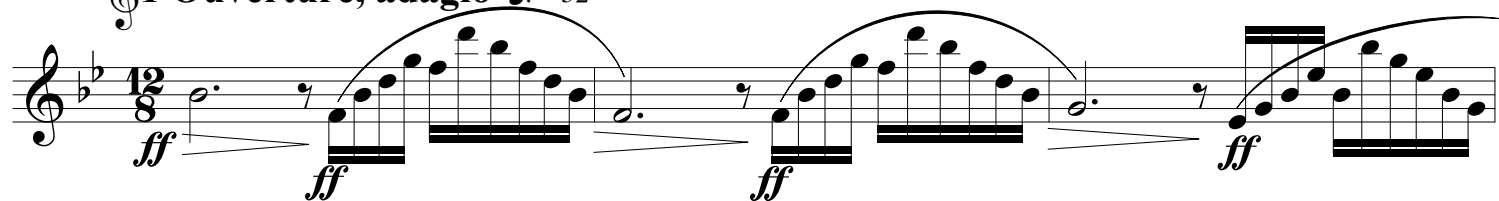


English Horn

Repelsteeltje

Arie van Hoek

1 Overture, adagio $\text{♩} = 52$ 

101 **@ 2** $\frac{3}{5}$ **Moto Mechanica, allegro** $\text{♩} = 120$
 (20 s.) *mp*

123 *mp*

139 **@ 3** $\frac{4}{4}$ **Moto Mechanica, allegro** $\text{♩} = 120$
 (10 s.) *mp* **@ 4** (40 s.)

157 *Tempo rubato* $\frac{5}{4}$ **Marcia Pomposo, maestoso** $\text{♩} = 96$
mf *> mf* *mf*

175 *rall. poco a poco*

183 *ff* *accel.* *rit.* *a tempo* *Tempo rubato* **@ 5** (25 s.)
ff *p* *mf* *> mf* *ff*

199 $\frac{6}{6}$ **Moto Mechanica, allegro** $\text{♩} = 120$
mp **@ 6** (25 s.)

216 $\frac{7}{8}$ **Tempo Breve** $\text{♩} = 148$ **@ 7** $\frac{8}{8}$ **Marcia Pomposo, maestoso** $\text{♩} = 96$
ff (17 s.) *mf* *> mf*

232 *mf* *rall. poco a poco*

242 *ff* *accel.* *rit. a tempo* *p*

250 *mf* *mf* *Tempo rubato* *@ 8* *9* *Valse Triste, andante* *♩ = 92* *@ 9*

281 *10* *Valse Triste, andante* *♩ = 92* *16* *pp* *p* *mf* *ff* *@ 10* *(15 s.)*

303 *11* *Entrada Pontifical, allegretto* *♩ = 62* *mf* *rall.*

309 *a tempo* *mf* *@ 11* *(10 s.)*

317 *12* *Entrada Pontifical, allegretto* *♩ = 62* *mf* *rall.*

323 *a tempo* *mf* *@ 12* *(30 s.)*

330 **13 Moto Mechanica, allegro** ♩ = 120

345 *mp* *p* **14 Valse Triste** 17 @ 14 (25 s.)

377 **15 Moto Mechanica, allegro** ♩ = 120

392 *mp* *p* @ 15 **16 Valse Triste** @ 16 8 (30 s.)

416 **17 Moto Mechanica, allegro** ♩ = 120

428

439 @ 17 (30 s.)

450 **18 Valse Romantique, ♩ = 162** *rall.* *a tempo* *f* *mf* *ff* 6 5

468 *f* *mf*

481 *molto rall.* **valse cantabile, ♩ = 108** 13 2 @ 18 (18 s.)

505 **19 Tempo Misterioso, andante** ♩ = 92 @ 19

pp *p* *mf* *ff* (4 s.)

511 **20 Entrada Pontifical, allegretto** ♩ = 62

mf *rall.* *a tempo* *mf* (18 s.)

519 **21 Valse Triste** @ 21

(50 s.)

534 **22 Entrada Pontifical, allegretto** ♩ = 62

mf *rall.* (25 s.)

540 **23 Entrada Pontifical, allegretto** ♩ = 62

a tempo *mf* (30 s.)

548 **24 Canzone di nome, allegretto** ♩ = 108

mf *molto rall.* *a tempo* *rall.* *ff* (25 s.)

577 **25 Diluvio Abuso, allegretto** $\text{♩} = 92$
 ff

587 $\text{@ } 25$
 (10 s.)

597 **26 Diluvio Abuso, allegretto** $\text{♩} = 92$
 ff

605 $\text{@ } 26$ **27 Diluvio Abuso a Pondera, allegretto** $\text{♩} = 92$
 (15 s.) ff

613 *poco accel.* ff **Andante** $\text{♩} = 82$ *solo* fff p *dolce*

626 p $\text{@ } 27$
 (20 s.)

643 **28 Grande Valse Romantique,** $\text{♩} = 168$
 f *rall.* mf *a tempo* mp p

653 p

665 mf

675

f *p*

687

p *f*

700

f *mf* *mp* *rall.* solo

717 *Dolce a tempo*

mp 15

748 *Dolce*

mp

765 *poco meno mosso* ($\text{♩} = 150$)

p 1.

781

p *f* *rall. molto* *Tempo di valse* ($\text{♩} = 168$)

791

p *f*

802

f *mf* *f* *ff*