

# Repelsteeltje

suite voor orkest  
van de sprookjesmuziek

Arie van Hoek

aan Tessa van Arkel

Flute 1

# Repelsteeltje

Arie van Hoek

Overture, adagio  $\text{♩} = 56$

Musical score for Flute 1, Overture, adagio section. The score is written in treble clef with a key signature of two flats (B-flat and E-flat) and a time signature of 12/8. The tempo is marked 'adagio' with a quarter note equal to 56 beats per minute. The dynamics range from *f* (forte) to *mp* (mezzo-piano). The score includes measures 1 through 16, with measure numbers 3, 7, 9, 13, and 16 explicitly marked. The music features a mix of eighth and sixteenth notes, often beamed together, and rests. The dynamics are marked as *f*, *ff*, *mp*, and *mf*. The score is divided into two systems, with measures 1-6 on the first system and measures 7-16 on the second system. The key signature changes to one flat (B-flat) at measure 9.

Musical score for Flute 1, Allegro section. The score is written in treble clef with a key signature of one flat (B-flat) and a time signature of 2/4. The tempo is marked 'Allegro' with a quarter note equal to 108 beats per minute. The dynamics range from *p* (piano) to *ff* (fortissimo). The score includes measures 19 through 39, with measure numbers 19, 25, 32, and 39 explicitly marked. The music features a mix of eighth and sixteenth notes, often beamed together, and rests. The dynamics are marked as *p*, *ff*, and *legato*. The score is divided into three systems, with measures 19-24 on the first system, measures 25-31 on the second system, and measures 32-39 on the third system. The key signature changes to natural (no flats or sharps) at measure 32.

# Repelsteeltje

46 Fl.1

54 Fl.2 *decresc.* **Largo**  $\text{♩} = 50$

62 *ff* 3 *ff* 3 3

69 **Allegro**  $\text{♩} = 108$  *ff* 3

76 **Polka Eleganza, maestoso**  $\text{♩} = 74$  *staccatissimo* 4 4 8 3

96 *staccatissimo* 4 *poco rit.* **Moto meccanica, allegro**  $\text{♩} = 120$  *f* *Change to Piccolo*

141 3 3

149 3 3 3 *f*

157 3 3

163 **Tempo Rubato**

# Repelsteeltje

## Marcia Pomposo, maestoso ♩ = 96

171 **12** **7** Change to Flute  
*mf*

195 *rall. poco a poco*

203 *accel.* *ff* *rit.* *a tempo* **7**

## Tempo Rubato

215 **2** 1. **2** 2. **3** **Valse Triste** ♩ = 92 **2** *p*

226 *mp* *mp*

230 *mp* *mp*

234 *mf* *mp*

239 *mp*

242 **3** *mp*

# Repelsteeltje

## Entrada Pontifical

252 **5** *mf* **3** *f* **3** **10** **2**

## Moto meccanica, allegro ♩ = 120

272 **5** Change to Piccolo **2** *mf* *f*

285 **3** **3**

291 **3** **3** **3**

298 *mf*

305 **3** **3** **3**

310 *rall.* **4** *rall. a tempo* *mf*

319

326

# Repelsteeltje

333 **18** **valse cantabile** ♩ = 102  
 Fl.2 *mp*

358 **Fl.1** *p*

366 **2** *mf* *f*

375 **Entrada Pontifical** **11** **Valse Triste** ♩ = 92  
*ff* *p*

388 *p* *mp* *mp*

394 **5** *pp* *p*

402 *p*

406 **6** *pp*

417 *ppp* *p* *mp*

# Repelsteeltje

423 **2**  
*mf* *mf* *mf*

428 *poco rit.* *f* *pp* **Canzone di nome** ♩ = 108

434 *molto rit.* *a tempo* *rall.* *ff*

447 **Dilivio Abuso, allegretto** ♩ = 92 **2** *ff* *f*

456 *f*

463 *f* **G.P.**

472 *f*

480 *ff* *ff* **Andante** ♩ = 82 **5**

487 *dolce* *p*

496 *7* *p* Repelsteeltje

# Grande Valse Romantique $\text{♩} = 168$

512 *pp* *f* *rall.* *a tempo* *2* *f*

520 *p*

528 *p*

536 *mf* *mp* *mf*

546 *f* *p*

556 *p*

565 *f*

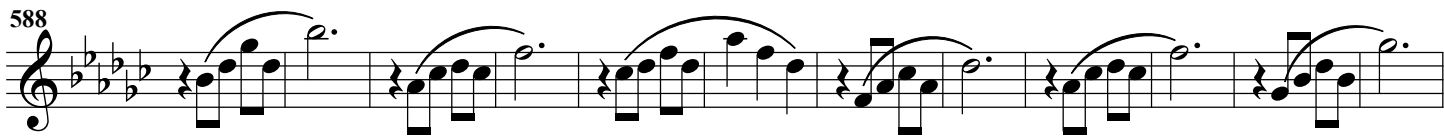
572 *mf* *f*

578 *mp* *rall.* *a tempo dolce* *p*



# Repelsteeltje

588



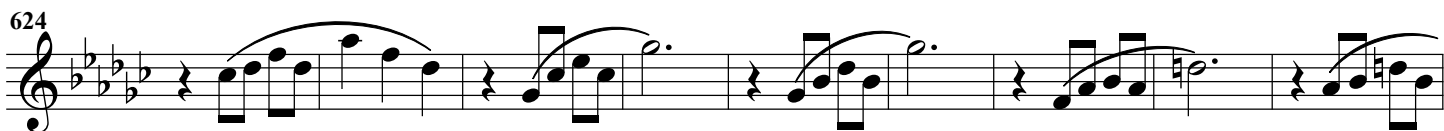
600



611



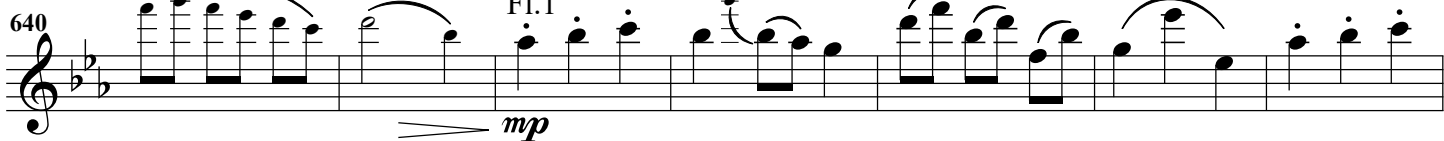
624



## Molto Pomposo $\text{♩} = 150$



640



647



654



662



671



679

