

# Serenade voor blazers

## *Schetsen uit de Betuwe*

### Arie van Hoek

aan mijn vrouw Anja

	tempo	tijdsduur
1. Allegro maestoso <i>Op pad</i>	(112)	5 min.
2. Largo <i>Verloren</i>	(60)	9 min.
3. Scherzo <i>Over de poes en de paarden</i>	(52-130-52-64-50)	6 min.
4. Andante <i>Een lome zomeravond op de schommel achter het huis</i>	(45)	5 min.
5. Largo – Allegro - Andante <i>Parade van de jonge eendjes</i>	(54-120-72)	5 min.
6. Scherzando <i>Dans van de mezen</i>	(56)	4 min.
7. Molto allegro – Adagio - Molto allegro <i>Mars van de dorpsharmonie</i>	(124-60-124)	6 min.
	Totaal	40 min.

## Cor Anglais

# Deel 1: Allegro maestoso

Arie van Hoek

Musical score for "The Swan" by Camille Saint-Saëns. The score is written for a single melodic line on a grand staff. The key signature has one flat (B-flat) and the time signature is common time (C). The score includes various dynamic markings: *f* (forte), *mp* (mezzo-piano), *cresc. poco a poco* (crescendo poco a poco), *ff* (fortissimo), *p* (piano), and *pp* (pianissimo). The score also features articulation marks such as accents and slurs. The score is divided into measures, with measure numbers 6, 10, 15, 20, 27, 33, 40, 44, 49, 54, 58, 63, and 68 indicated. The score ends with a double bar line and a repeat sign.

72 *p*

76 *pp* solo

81 *f* *pp* *mp*

87

91

94

97

102 *mf*

108

113

119 *mp*

124 *f* *mp* cresc. poco a poco

129 *ff* *f*

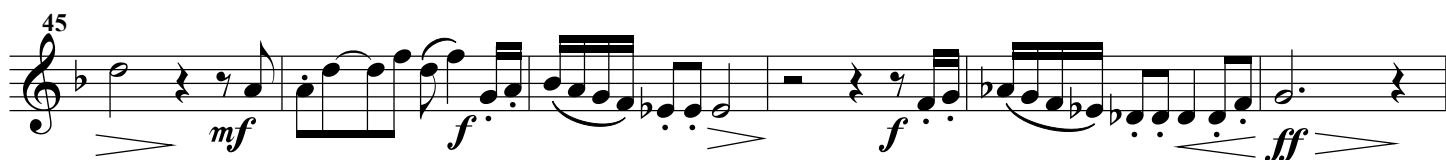
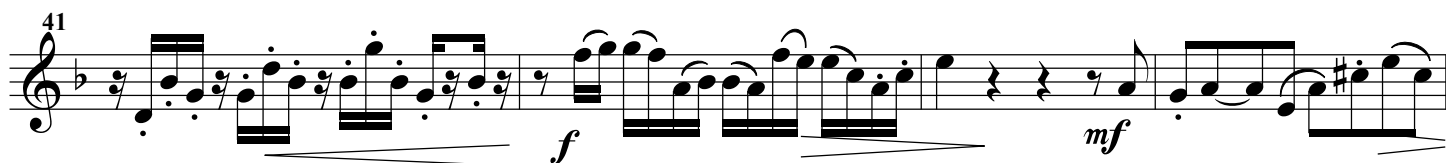
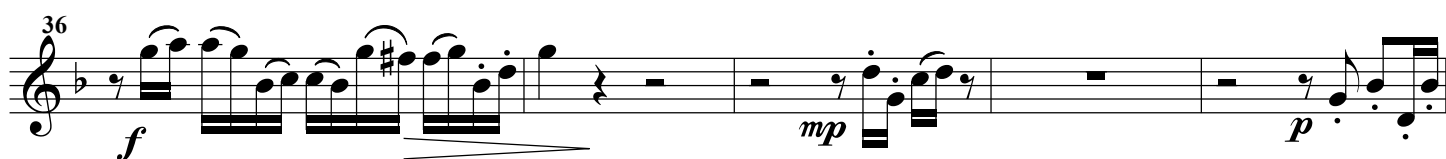
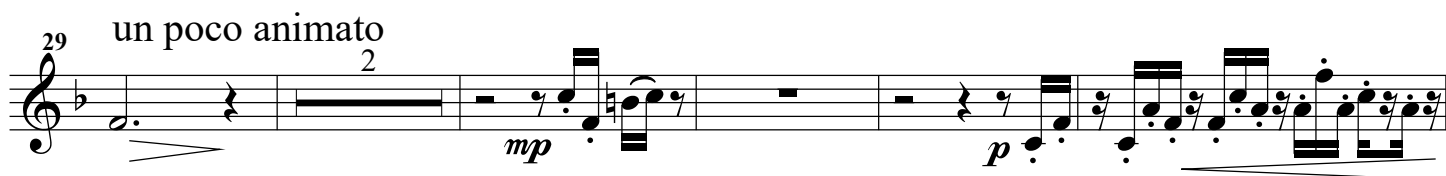
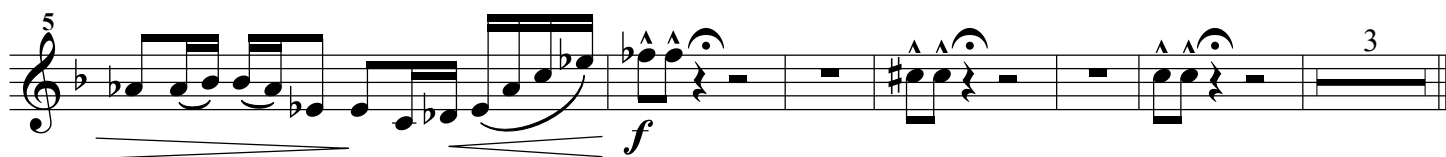
135 *mp* cresc. poco a poco

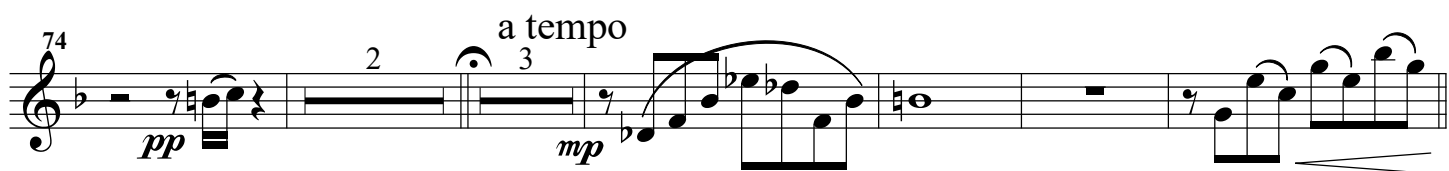
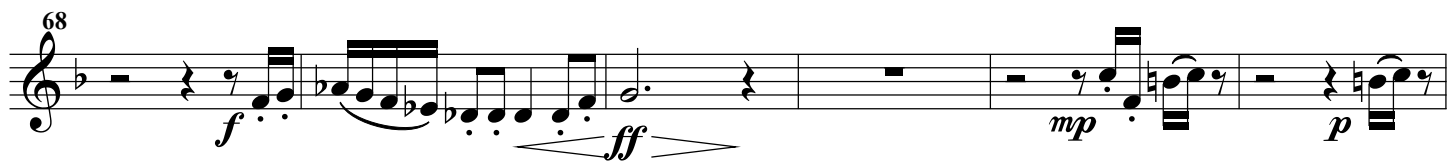
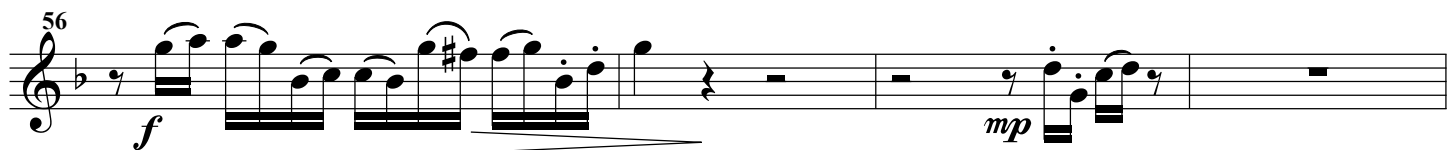
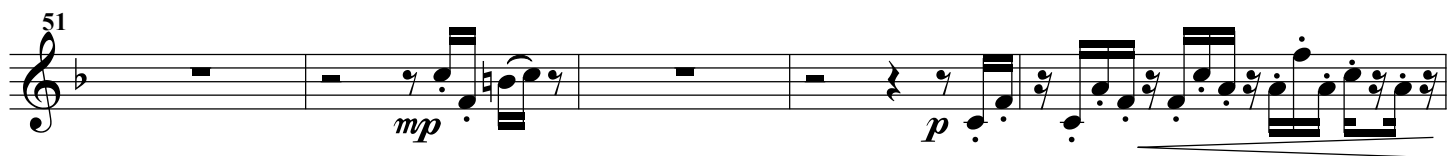
140 *ff* *p*

# Deel 2: Largo

Cor Anglais

Arie van Hoek





Adagio  $\frac{2}{4}$  Presto subito

Adagio  $\frac{4}{4}$  Allegretto scherzando

*f* *rit.* *f* *p* *mp* *mp* *mf* *mp* *ff* *pp* *p* *ff* *mf*

1 2

5

70 *mp* *p*

76 *f* *p* *p*

82 *p* *f*

88 8 *p*

102 *mf* *p*

106 5 *mp* *p*

116 *mf* *f*

120 *ff* rit. *mf* Allegretto maestoso

124 3

135 *f* *mp*

144 3 *mf* rit. *p*

Measures 15-20 of the piece. The notation continues on a single staff. Measure 15 starts with a treble clef and a key signature of one flat (B-flat). The music consists of eighth and sixteenth notes, with accents (>) over several notes. The dynamic marking *pp* (pianissimo) is at the beginning, and *mp* (mezzo-piano) appears later in the sequence.



59 *mp*

65 *f* *ff*

70 *f* *ff*

75 *mp*

81 *pp* *mp*

88 *mp*

95 *ff* *rit.*

9a tempo

101 *ff*

# Deel 5: Largo-Allegro-Andante

Cor Anglais

Arie van Hoek

7 *mp* *mf* *mf*

14 *pp* *mp* *mf*

24 *f* *mf* *mp* *pp* *rit.*

30 *Allegro* 16 16 *pp*

67

73 *Allegro* *mf*

79

85

91 *f*

[illegible]

11

95 1 *ff* 2 *f*

103 5 *p* *mp* *mf*

115 *f* *mp* *legato*

123 *f*

129 *mf* *ff*

135 *mf* *ff*

141 *mf* *legato* *ff*

149 *ff*

157 *mp* *f* *ff*

164 *mp* *f* *ff*

171 *p*

177

183

**Allegro molto** ♩ = 124

## Arie van Hoek

Musical score for "The Rose Tree" in 2/4 time, featuring a treble clef and a key signature of one sharp (F#). The score consists of eight staves of music, with measures numbered 1 through 55. The music is written in a single melodic line. Dynamics include forte (f), mezzo-forte (mf), piano (p), and mezzo-piano (mp). The piece concludes with a double bar line and a repeat sign.

61 *3<sup>rd</sup> time rall.* *f* *a tempo*

67

73 *ff* *mf*

79 *ff* *Fine*

85 *ff* *rall.* *Adagio* ♩ = 60  $\frac{3}{4}$  4

93 *mp*

99

106 *p* *p* *p* *p* *p* *p*

115 *rall.* *a tempo* *mp*

122 *calando* *mp* *D.S. al Fine*