

Jalousie

tango tzigane door

Jacob Gade

bewerking als toegift voor koperkwintet door

Arie van Hoek

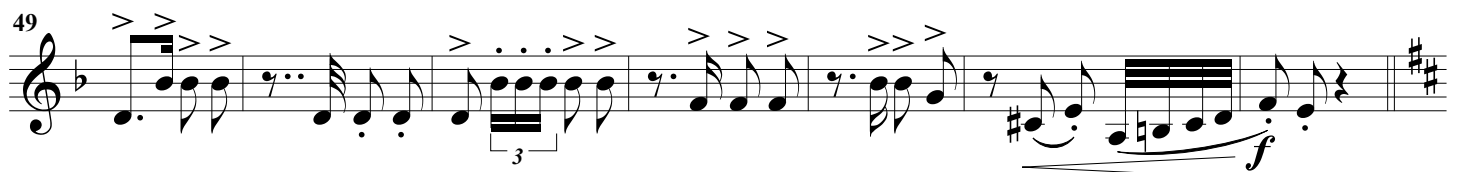
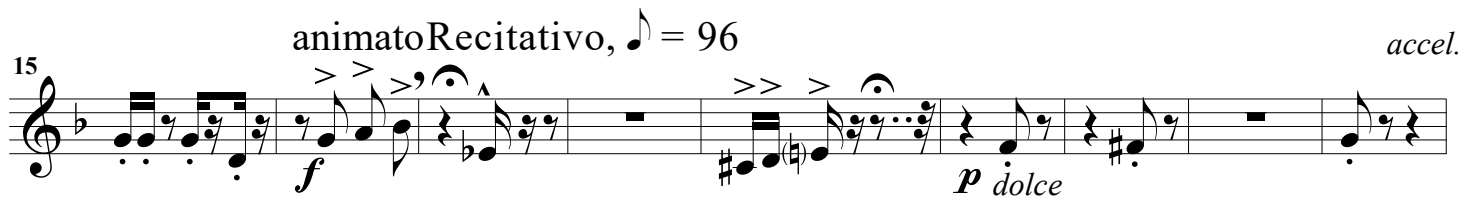
Jalousie

Tango tzigane

Jacob Gade, arr. Arie van Hoek

Trumpet 2 in C

Introduction moderato



56 *pp* *p*

Staff 56-63: Treble clef, key of D major. Measures 56-63. Dynamics: *pp* (measures 56-60), *p* (measures 61-63). Articulation: accents on measures 56, 57, 58, 59, 60, 61, 62, 63. Phrasing: a long slur covers measures 56-63.

64 *pp* *p* *pp*

Staff 64-72: Treble clef, key of D major. Measures 64-72. Dynamics: *pp* (measures 64-65), *p* (measures 66-70), *pp* (measures 71-72). Articulation: accents on measures 64, 65, 66, 67, 68, 69, 70, 71, 72. Phrasing: a long slur covers measures 64-72.

73 *pp* *pp*

Staff 73-80: Treble clef, key of D major. Measures 73-80. Dynamics: *pp* (measures 73-77), *pp* (measures 78-80). Articulation: accents on measures 73, 74, 75, 76, 77, 78, 79, 80. Phrasing: a long slur covers measures 73-80.

81 *mf* 1.

Staff 81-87: Treble clef, key of D major. Measures 81-87. Dynamics: *mf* (measures 81-87). Articulation: accents on measures 81, 82, 83, 84, 85, 86, 87. Phrasing: a long slur covers measures 81-87.

88 2. *mf* *mp*

Staff 88-97: Treble clef, key of D major. Measures 88-97. Dynamics: *mf* (measures 88-92), *mp* (measures 93-97). Articulation: accents on measures 88, 89, 90, 91, 92, 93, 94, 95, 96, 97. Phrasing: a long slur covers measures 88-97.

98 *mp* *p*

Staff 98-105: Treble clef, key of D major. Measures 98-105. Dynamics: *mp* (measures 98-102), *p* (measures 103-105). Articulation: accents on measures 98, 99, 100, 101, 102, 103, 104, 105. Phrasing: a long slur covers measures 98-105.

106 *f*

Staff 106-115: Treble clef, key of D major. Measures 106-115. Dynamics: *f* (measures 106-115). Articulation: accents on measures 106, 107, 108, 109, 110, 111, 112, 113, 114, 115. Phrasing: a long slur covers measures 106-115.

116 *mf* *f* *p*

Staff 116-123: Treble clef, key of D major. Measures 116-123. Dynamics: *mf* (measures 116-118), *f* (measures 119-121), *p* (measures 122-123). Articulation: accents on measures 116, 117, 118, 119, 120, 121, 122, 123. Phrasing: a long slur covers measures 116-123.

Notice of any performance will be very much appreciated.

© Arie van Hoek, Andelst, Holland, 2017